

Department of Engineering/Road Management  
Dan Gaillet, P.E., County Engineer/ Road Manager

3137 South Liberty Street, Canton, MS 39046  
Office (601) 855-5670 FAX (601) 859-5857

## MEMORANDUM

April 25, 2017

To: Sheila Jones, Supervisor, District I  
Trey Baxter, Supervisor, District II  
Gerald Steen, Supervisor, District III  
David Bishop, Supervisor, District IV  
Paul Griffin, Supervisor, District V

From: Dan Gaillet, P.E.  
County Engineer and Road Manager

Re: Hampton Ridge IVa of Caroline  
Final Plat

Caroline, LLC presented a final plat of Hampton Ridge IVa of Caroline to the County for approval. The development is approximately 4.3 acres with 15 lots ranging from .19 to .28+ acres. This development is located within Lake Caroline.

The development has met the requirements of the County; therefore, the Engineering Department recommends approval.

---

SHEILA JONES  
District One

TREY BAXTER  
District Two

GERALD STEEN  
District Three

DAVID BISHOP  
District Four

PAUL GRIFFIN  
District Five

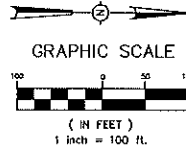
NOTES:

- 1. THIS SUBDIVISION LIES WITHIN THE LIMITS ESTABLISHED FOR ZONE "X" (NO SHADING) ACCORDING TO FIRM MAP NUMBER 26088C0385 F, EFFECTIVE MARCH 17, 2010.
2. DIMENSIONS ALONG CURVES ARE CHORD DISTANCES.
3. SURVEY CLASSIFICATION "B".
4. REFERENCE MERIDIAN: NORTH REFERENCED TO THE EAST LINE OF HAMPTON RIDGE OF CAROLINE II.
5. IRON PINS SET AT ALL LOT CORNERS.
6. AREA = 4.30 ACRES, MORE OR LESS.
7. DATE OF FIELD SURVEY: MARCH 18, 2017.
8. DATE OF PREPARATION OF PLAT: MARCH 28, 2017.
9. COMMON AREAS AND EASEMENTS SHALL BE MAINTAINED BY THE HOME OWNERS ASSN. OR ADJACENT LOT OWNER, WHICHEVER IS APPLICABLE AS OUTLINED IN THE COVENANTS.

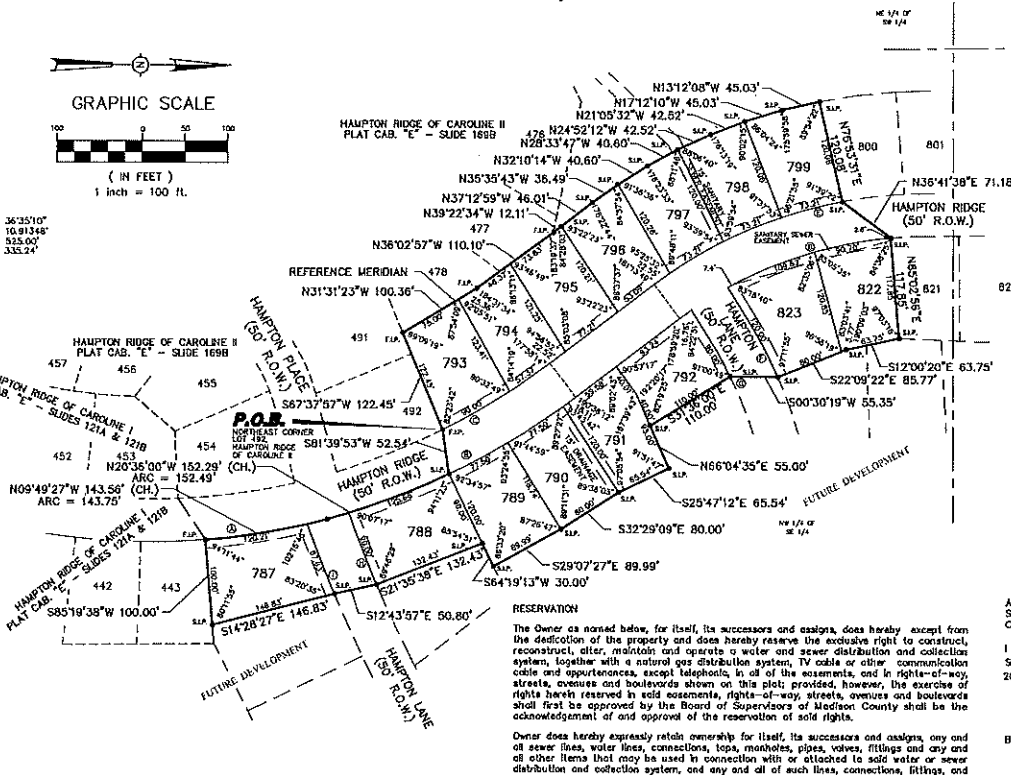
F.I.P. DENOTES FOUND 1/2" IRON PIN
S.I.P. DENOTES SET 1/2" IRON PIN

RIGHT-OF-WAY CURVE DATA

Table with 4 columns of curve data including bearings, distances, and curve parameters (R, L, P, T, M, A, C).



HAMPTON RIDGE IVa OF CAROLINE
SITUATED IN THE
NW 1/4 OF THE SE 1/4 OF SECTION 11,
TOWNSHIP 8 NORTH - RANGE 1 EAST
MADISON COUNTY, MISSISSIPPI



SURVEYOR'S CERTIFICATE
STATE OF MISSISSIPPI
COUNTY OF MADISON
I, Donald L. McDonald, Professional Surveyor, do hereby certify that at the request of the undersigned Owner, I have subdivided and platted the following described land being situated in the Northwest 1/4 of the Southeast 1/4 of Section 11, T8N-R1E, Madison County, Mississippi:

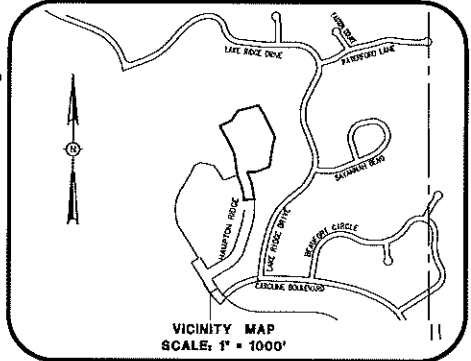
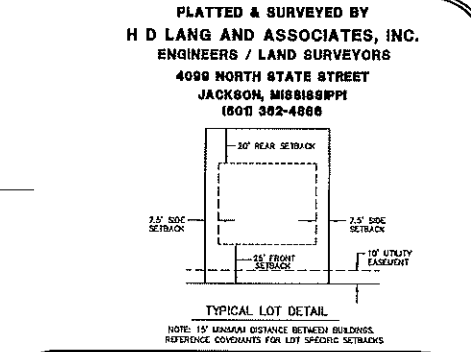
Begin at the Northeast corner of Lot 492, Hampton Ridge of Caroline II, a subdivision according to the map or plat thereof, on file and of record in the office of the Chancery Clerk of Madison County at Canton, Mississippi, as now recorded in Plat Cabinet E at Side 168-B and run thence South 67 degrees 37 minutes 57 seconds West along the North line of said Hampton Ridge of Caroline I for a distance of 122.45 feet to an existing 1/2" iron pin; leaving said North line of Hampton Ridge of Caroline I, run thence North 31 degrees 31 minutes 23 seconds West along the East line of Hampton Ridge of Caroline I for a distance of 100.38 feet to an existing 1/2" iron pin; run thence North 36 degrees 02 minutes 57 seconds West along said East line of Hampton Ridge of Caroline I for a distance of 110.10 feet to an existing 1/2" iron pin; leaving said East line of Hampton Ridge of Caroline I, run thence North 39 degrees 22 minutes 34 seconds West for a distance of 12.11 feet to an existing 1/2" iron pin; run thence North 37 degrees 12 minutes 59 seconds West for a distance of 46.01 feet to a set 1/2" iron pin; run thence North 35 degrees 35 minutes 43 seconds West for a distance of 38.49 feet to a set 1/2" iron pin; run thence North 32 degrees 14 seconds West for a distance of 40.80 feet to a set 1/2" iron pin; run thence North 24 degrees 52 minutes 12 seconds West for a distance of 42.52 feet to a set 1/2" iron pin; run thence North 21 degrees 05 minutes 32 seconds West for a distance of 42.52 feet to a set 1/2" iron pin; run thence North 17 degrees 12 minutes 10 seconds West for a distance of 45.03 feet to a set 1/2" iron pin; run thence North 13 degrees 12 minutes 08 seconds West for a distance of 45.03 feet to a set 1/2" iron pin; run thence North 7 degrees 53 minutes 31 seconds East for a distance of 120.08 feet to a set 1/2" iron pin; run thence North 36 degrees 41 minutes 38 seconds East for a distance of 71.18 feet to a set 1/2" iron pin; run thence North 65 degrees 02 minutes 55 seconds East for a distance of 117.85 feet to a set 1/2" iron pin; run thence South 12 degrees 06 minutes 20 seconds East for a distance of 63.75 feet to a set 1/2" iron pin; run thence South 22 degrees 09 minutes 22 seconds East for a distance of 85.77 feet to a set 1/2" iron pin; run thence South 31 degrees 36 minutes 00 seconds East for a distance of 110.00 feet to a set 1/2" iron pin; run thence North 68 degrees 04 minutes 35 seconds East for a distance of 55.00 feet to a set 1/2" iron pin; run thence South 29 degrees 47 minutes 12 seconds East for a distance of 85.54 feet to a set 1/2" iron pin; run thence South 32 degrees 29 minutes 09 seconds East for a distance of 80.00 feet to a set 1/2" iron pin; run thence South 28 degrees 07 minutes 27 seconds East for a distance of 89.69 feet to a set 1/2" iron pin; run thence South 84 degrees 19 minutes 13 seconds West for a distance of 30.00 feet to a set 1/2" iron pin; run thence South 21 degrees 35 minutes 38 seconds East for a distance of 132.43 feet to a set 1/2" iron pin; run thence South 12 degrees 43 minutes 57 seconds East for a distance of 50.80 feet to a set 1/2" iron pin; run thence South 14 degrees 28 minutes 27 seconds East for a distance of 146.83 feet to a set 1/2" iron pin on the North line of Hampton Ridge of Caroline I, a subdivision according to the map or plat thereof, on file and of record in the aforesaid Chancery Clerk's office, as now recorded in Plat Cabinet E at Sides 121 A and 121 B; run thence South 85 degrees 18 minutes 35 seconds West along said North line of Hampton Ridge of Caroline I for a distance of 100.00 feet to an existing 1/2" iron pin on the East right-of-way line of Hampton Ridge (as now laid out and improved); said point also being the Southeast corner of the aforesaid Hampton Ridge of Caroline II; said point further being on the arc of a 718.10 foot radius curve bearing to the East a central angle of 12 degrees 47 minutes 18 seconds and a radius of 799.43 feet; leaving said North line of Hampton Ridge of Caroline I, run thence northwesterly along said East right-of-way line of Hampton Ridge, along the East line of said Hampton Ridge of Caroline II and along the arc of said curve on an arc length of 143.75 feet to the end of said curve; said curve having a chord bearing of North 09 degrees 49 minutes 27 seconds West and a chord distance of 143.36 feet; said end of curve being the Point of Compound Curvature of a 6.86230 degree curve bearing to the left having a central angle of 11 degrees 32 minutes 12 seconds and a radius of 880.00 feet; run thence northwesterly along said East right-of-way line of Hampton Ridge, along the East line of said Hampton Ridge of Caroline II and along the arc of said curve on an arc length of 152.49 feet to a set 1/2" iron pin on the North line of said Hampton Ridge of Caroline II; said curve having a chord bearing of North 20 degrees 36 minutes 00 seconds West and a chord distance of 152.28 feet; leaving said East right-of-way line of Hampton Ridge, said East line of Hampton Ridge of Caroline II and the arc of said curve, run thence South 81 degrees 39 minutes 53 seconds West along said North line of Hampton Ridge of Caroline II for a distance of 52.54 feet to the POINT OF BEGINNING, containing 4.30 acres, more or less.

SURVEYOR'S CERTIFICATE OF COMPLIANCE
STATE OF MISSISSIPPI
COUNTY OF MADISON
I, Donald L. McDonald, Professional Surveyor, do hereby certify that the monuments and markers shown hereon are in place on the ground and the plat and plan shown and described hereon are a true and correct representation of a survey to the accuracy designated in the subdivision regulations for Madison County, Mississippi.

Witness my signature this the \_\_\_ day of \_\_\_ 20\_\_
Donald L. McDonald, Professional Surveyor

CERTIFICATE AND DEDICATION OF OWNER
STATE OF MISSISSIPPI
COUNTY OF MADISON
I, Mark S. Jordan, President of Caroline, LLC, a Mississippi Limited Liability Company, do hereby certify that the aforementioned is the owner of the land described in the foregoing certificate of Donald L. McDonald, Professional Surveyor, and that, as President of said Caroline, LLC, I have caused the same to be subdivided and platted as shown hereon, and hereby adopt this plat subdivision as the free act and deed of said Limited Liability Company and has designated the same as Hampton Ridge IVa of Caroline and dedicates the street rights-of-way and drainage easements as shown hereon for public use forever.

Witness my signature this the \_\_\_ day of \_\_\_ 20\_\_
Caroline, LLC, a Mississippi Limited Liability Company
By: Mark S. Jordan, President



APPROVAL OF THE BOARD OF SUPERVISORS
STATE OF MISSISSIPPI
COUNTY OF MADISON
I hereby certify that this is a true copy and that this plat was approved by the Board of Supervisors of Madison County in session on the \_\_\_ day of \_\_\_ 20\_\_

Madison County Board of Supervisors
By: Trey Boster, Board President
Attest: Ronny Lott, Chancery Clerk

CERTIFICATE OF COMPARISON
STATE OF MISSISSIPPI
COUNTY OF MADISON
We, Ronny Lott, Chancery Clerk and Donald L. McDonald, Professional Surveyor, do hereby certify that we have carefully compared this plat of Hampton Ridge IVa of Caroline with the original thereof, as made by said Donald L. McDonald, Professional Surveyor, and find it to be a true and correct copy of said map or plat.

Given under my hand and seal of office this the \_\_\_ day of \_\_\_ 20\_\_
Donald L. McDonald, PLS
Ronny Lott, Chancery Clerk

PERSONALLY appeared before me, the undersigned officer in and for the jurisdiction aforesaid, the within named Mark S. Jordan, who acknowledged to me that he is President of Caroline, LLC, a Mississippi Limited Liability Company, the owner, who acknowledged to me that he signed and delivered this plat and the certificates thereon as his own act and deed, for and on behalf of said Caroline, LLC, after being authorized so to do, and Donald L. McDonald, Professional Surveyor, who acknowledged to me that he signed and delivered this plat and the certificates thereon as his own act and deed, on the day and year herein mentioned.

Given under my hand and seal of office this the \_\_\_ day of \_\_\_ 20\_\_
Notary Public My Commission Expires: \_\_\_

COUNTY ENGINEER'S RECOMMENDATION
STATE OF MISSISSIPPI
COUNTY OF MADISON
I have examined this plat and find it conforms to all conditions set forth on the preliminary plat as approved by the Board of Supervisors of Madison County, Mississippi and thus recommend final approval.

Given under my hand and seal of office this the \_\_\_ day of \_\_\_ 20\_\_
By: Ronny Lott, Chancery Clerk
Dan Gallet, P.E., County Engineer